



"C" - super silent centrifugal



- High pressure duct fans
- 10 models
- IPX4 - Splashproof
- 2 sizes for toilets, shower-rooms, bathrooms, utility rooms and kitchens
- For walls or ceilings
- Standard, Cord, Timer and Humidity Control
- SUPER SILENT 2 speed models
- Exceeds Building Regulations requirements (including new Document F)

GENERAL

- high pressure duct fan to exhaust air and fumes through long lengths of rigid or flexible ducting
- super silent two speed models
- hole diameter 4"/10cm on all models
- integral spring loaded backdraught shutter
- adjustable timer - 3-15 minutes
- dynamic humidistat with night time set back and anti-hunting device
- humidistat model with neon to show fan in manual operation
- backward curved centrifugal impeller to ensure near silence on low speed operation
- filter available on all models
- IPX4 - Splashproof can safely be installed in Zones I and II

SPECIFICATION

- casings from high quality, impact resistant, white thermo-plastic material with high mechanical strength
- double insulated motors of shaded pole type mounted on self-lubricating, sealed ball bearings for long life
- motor windings protected to Class B
- motors incorporate thermal cut-out
- maximum ambient temperature - 40°C

COMPLY WITH

- EN60335-2-80
- EC Low Voltage Directive 2006/95/CD
- EC Directive EMC204/108/CE
- CE marked

RANGE

CB95s

- CB95 - standard
- CB95T - overrun timer
- CB952C - 2 speed, cord
- CB95H2C - humidistat, 2 speed, cord
- CB95HCT - humidistat, cord and timer

CK220s

- CK220 - standard
- CK220T - overrun timer
- CK2202C - 2 speed, cord
- CK220H2C - humidistat, 2 speed, cord
- CK220HCT - humidistat, cord and timer

SELV models

- CB952CLV - 2 speed, cord
- CB95H2CLV - humidistat, 2 speed, cord



Filter

TYPICAL SPECIFICATION

Supply and install a Vectaire CB95H2C high pressure centrifugal fan for toilets/bathrooms supplied by Vectaire Ltd, Lincoln Road, Cressex Business Park, High Wycombe, Bucks, HP12 3RH.

This fan can either be for installation in a ceiling or wall using 4"/10cm ducting. The fan should be complete with an integral backdraught shutter and anti-vibration gasket. It should have a dynamic humidistat and two speeds. It should operate automatically at its near silent lower speed at a pre-determined level of relative humidity, and be capable of being boosted to its higher level by use of a pull-cord.

The fan should be made of shockproof and heat resistant plastic, contain a motor with sealed, self-lubricating bearings, and be protected with a thermal cut-out.

The fan should be double insulated and be capable of being used with long lengths of ducting.

The fan should be splashproof (IPX4) rated, and comply with all current IEE, EC and Building Regulations requirements for installation into a toilet, shower-room, bathroom or utility room.



Tel: +44(0)1494 522333
Fax: +44(0)1494 522337

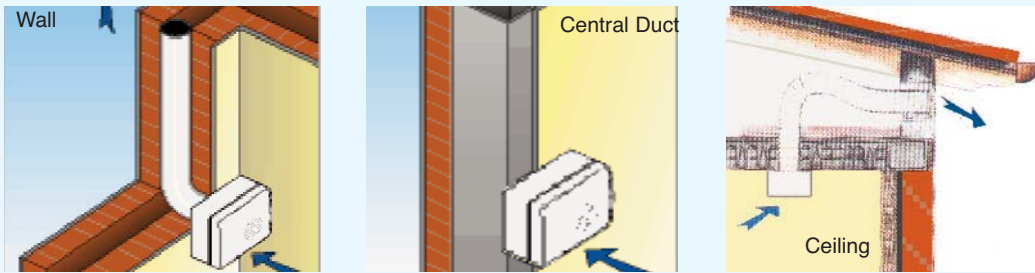
Vectaire Ltd
Lincoln Road, Cressex Business Park
High Wycombe, Buckinghamshire, HP12 3RH

Email: sales@vectaire.co.uk
Web: www.vectaire.co.uk

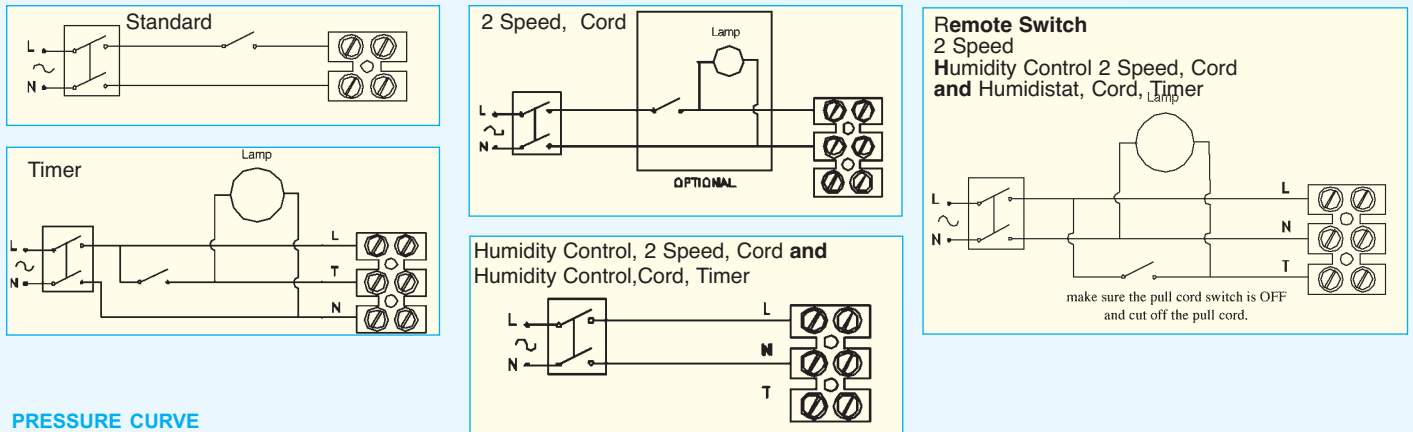
TECHNICAL CHARACTERISTICS



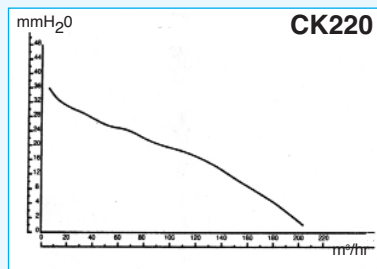
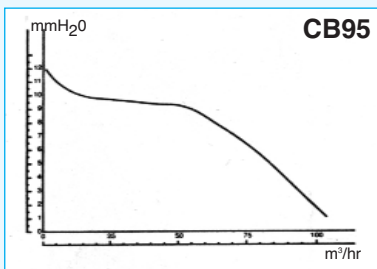
INSTALLATIONS



WIRING DIAGRAMS

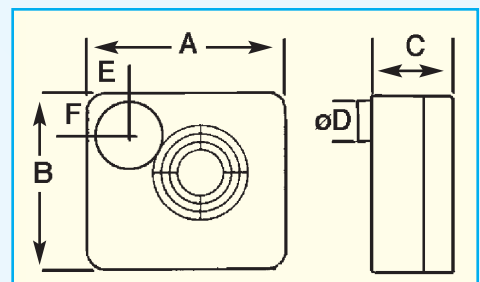


PRESSURE CURVE



DIMENSIONS

	A	B	C	øD	E	F
CB 95s	205	178	103	80/97	48	47
CK 220s	237	213	115	98	57	56



TECHNICAL DATA

Model	max m³/hr	min m³/hr	max litres/sec	min litres/sec	Max mm H ₂ O	Max Pa	Volts	Hz	max Watts	min Watts	max dbA	min dbA	Hole dia mm	IPX4	Weight kg
CB 95s	110	30	30	8	15	144	230	50	27	6	42	*nr	80/100	yes	1.2
CK 220s	220	50	61	14	34	333	230	50	45	7	49	*nr	100	yes	1.8

*nr - the sound of the CB/CK 2 speed fans at their lower level is so quiet as to be virtually non-recordable

ACCESSORIES



FULL RANGE OF ACCESSORIES AVAILABLE INCLUDING FLEXIBLE AND FLAT DUCTING

Vectaire Ltd

Lincoln Road, Cressex Business Park
High Wycombe, Buckinghamshire, HP12 3RH

Tel: +44(0)1494 522333
Fax: +44(0)1494 522337

Email: sales@vectaire.co.uk
Web: www.vectaire.co.uk